



# ***FLIGHTCHECK 5.5***

M A C I N T O S H / W I N D O W S

A d d e n d u m 3 ( 5 . 5 2 & 5 . 1 2 )

**Markzware**

*The Intelligent Preflight Software with TrueFile™ Solutions!*

March 22, 2005

Page 1

©1993–2005. All Rights Reserved. U.S. Patent #5,963,641

Quark, QuarkXPress, and QuarkXTensions are registered trademarks of Quark, Inc. Apple and Macintosh are registered trademarks of Apple Computer, Inc. Adobe Photoshop, Adobe Illustrator, Adobe PageMaker, Adobe InDesign, Adobe FrameMaker, Adobe Portable Document Format and Postscript are registered trademarks of Adobe Systems, Inc., CorelDRAW is a registered trademark of Corel, Inc., FreeHand is a registered trademark of Macromedia, Inc., Multi-Ad Creator is a registered trademark of Multi-Ad Services, Microsoft Word, Microsoft Publisher and Microsoft PowerPoint are a registered trademarks of Microsoft Corporation. Pantone and Pantone Matching System are registered trademarks of Pantone, Inc.

Information in the document is subject to change without notice and does not represent a commitment on the part of Markzware. No part of this manual may be reproduced or transmitted in any form or by any means, electronic or mechanical, including photocopying and recording, for any purpose without the expressed written permission of Markzware.

**MARKZWARE DISCLAIMER** Markzware is not affiliated with Quark, Inc., Adobe Systems, Inc., Corel, Inc., Macromedia, Inc., Multi-Ad or Microsoft. Markzware makes no warranties, expressed or implied, concerning the computer eXTensions, programs, and products, including, but not limited to, the implied warranty of merchantability and the implied warranty of fitness for a particular purpose. The entire risk as to the results and performance of the computer eXTensions, programs, and products listed in this manual is assumed by the user. In no event shall Markzware, its directors, officers, employees, or agents be liable to you for any consequential, incidental, or indirect damages (including damages for loss of business profits, business interruption, loss of business information, and the like) arising out of the use or inability to use the computer eXTensions, programs, and products listed in this manual even if Markzware has been advised of such damages. Because some states do not allow the exclusion or limitation of liability for consequential or incidental damages, the above may not apply to you. Markzware's liability to you for actual damages from any cause whatsoever, and regardless of the form of the action, whether in contract, tort (including negligence), product liability, or otherwise, will be limited to \$5.

**ADOBE DISCLAIMER** In no event will Adobe Systems, Inc., be liable for direct, indirect, special, incidental or consequential damages resulting from any defect in the software or its documentation, even if advised of the possibility of such damages. In particular, Adobe shall have no liability for any programs or data stored in or used with Adobe products, including the costs of recovering such programs or data.

**APPLE DISCLAIMER** In no event will Apple Computer, Inc., be liable for direct, indirect, special, incidental, or consequential damages resulting from any defect in the software or its documentation, even if advised of the possibility of such damages. In particular, Apple shall have no liability for any programs or data stored in or used with Apple products, including the costs of recovering such programs or data.

**COREL DISCLAIMER** In no event will Corel Corporation be liable for direct, indirect, special, incidental or consequential damages resulting from any defect in the software or its documentation, even if advised of the possibility of such damages. In particular, Corel shall have no liability for any programs or data stored in or used with Corel products, including the costs of recovering such programs or data.

**MACROMEDIA DISCLAIMER** In no event will Macromedia, Inc., be liable for direct, indirect, special, incidental, or consequential damages resulting from any defect in the software or its documentation, even if advised of the possibility of such damages. In particular, Macromedia shall have no liability for any programs or data stored in or used with Macromedia's products, including the costs of recovering such programs or data.

**MULTI-AD SERVICES DISCLAIMER** In no event shall Multi-Ad Services, Inc., be liable to a customer for any special, indirect, incidental or consequential damages in any way relating to the use or arising out of the use of Multi-Ad Creator2. In addition, Multi-Ad's liability to the customer for direct damages relating to or arising out of the program shall in no event exceed the purchase fee paid by the customer for use of the program.

**MICROSOFT DISCLAIMER** In no event will Microsoft Corporation be liable for direct, indirect, special, incidental or consequential damages resulting from any defect in the software or its documentation, even if advised of the possibility of such damages. In particular, Microsoft shall have no liability for any programs or data stored in or used with Microsoft products, including the costs of recovering such programs or data.

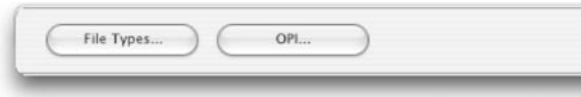
**QUARK DISCLAIMER** Quark, Inc., makes no warranties, either expressed or implied regarding the enclosed computer software, its merchantability, or its fitness for any particular purpose. Quark, Inc., disclaims all warranties including but not limited to the warranties of the distributors, retailers and developers of the enclosed software. Without limiting the foregoing, in no event shall Quark, Inc., be liable for any special, indirect, incidental or consequential damages in any way relating to the use or arising out of the use of the enclosed software. Quark, Inc.'s liability shall in no event exceed fifty dollars (\$50.00). The exclusion of implied warranties and/or the exclusion or limitation of incidental or consequential damages is not allowed in some areas, so these exclusions and limitations may not apply to you.

**WARNING** The FlightCheck® font collection feature collects from the user's system file and from archives contained on locally mounted disk drives those fonts that are used or referenced by a particular graphics document. The feature collects the fonts into a job folder either for use by a third party such as a printer or a service bureau for printing or editability. If you are such a third party, you are hereby advised that the fonts contained within collected job folders are intended for your use only in the event that you are independently licensed to do so. Under no circumstances are the fonts contained in the collected job folder intended for use by you for any other purpose otherwise. Any other unlicensed use of the fonts contained in the collected job folder would be in violation of copyright and other intellectual property laws.

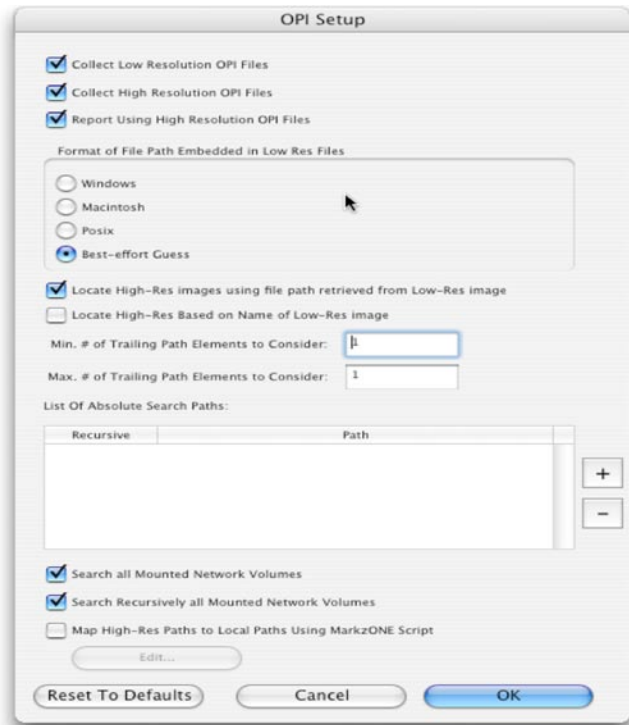
# New Preferences

## OPI SETUP

The OPI button located within the FlightCheck Preferences will give you access to the OPI options. *(figure 1)*



*(figure 1)*



*(figure 2)*

In Figure 2 shows all of the currently available OPI options for FlightCheck.

**Collect Low Resolution OPI Files** - Select this option to collect all low resolution (FPO) images during the collection process.

**Collect High Resolution OPI Files** - Select this option to collect all high resolution file(s) during the collection process.

**Report using High Resolution OPI Files** - Selecting this option will cause FlightCheck to use only the high resolution file(s) during the preflight process. The low resolution file(s) will be ignored.

**Format of the File Path Embedded in Low Res Files** -

- Windows - Select this option if the OPI image(s) contains a Windows formatted OPI path.
- Macintosh - Select this option if the OPI Image(s) contains a Macintosh formatted OPI path.
- Posix - Select this option if the OPI Image(s) contains a path in Posix format.
- Best effort-Guess- Select this option to allow FlightCheck to guess what format the OPI path is.

**Locate High-Res images using file path retrieved from Low-Res image** - Select this option to have FlightCheck perform a search for the high resolution images using the path from the low res images.

**Locate High-Res images based on Name of Low Res image** - Select this option to have FlightCheck search for the high res image(s) based on the name of the low resolution image.

**Min # of Trailing Path Elements to Consider** - Counting from the right of the OPI path, the minimum number of directories from the OPI path to retain while scanning for OPI files (does not include the volume name or drive)

**Max # of Trailing Path Elements to Consider** - Counting from the right of the OPI path, the maximum number of directories from the OPI path to retain while scanning for OPI files (does not include the volume name or drive)

**List of Absolute Search Paths** - This feature allows a user to set a specific path to a directory or directories of images used for OPI. *(figure 3)*



*(figure 3)*

- “+” : Click on the “+” button to add a new path.
  - “-”: Click on the “-” to remove a selected path.
  - Recursive: This option will force FlightCheck to scan sub-folders contained within a given path.
- \*\*\* Note: Using the Recursive feature may compromise the performance of FlightCheck until the scan is complete.

**Search All Mounted Network Drives** - Select this feature to have FlightCheck scan through all network drives while searching for OPI Images. The speed at which this feature performs is dependent on the speed of the network. Note: This feature is not active by default.

**Search Recursively All Mounted Network Drives** - This feature will search all folders and sub-folders on a mounted network drive while searching for OPI Images. The speed at which this feature performs is dependent on the speed of the network. Note: This feature is not active by default.

**Map High-Res Paths to Local Paths using MarkzONE Script** - This feature will allow a user to re-map High-Res paths using a MarkzONE script.

- Edit...: This will display an input window where the mapping script will be written.

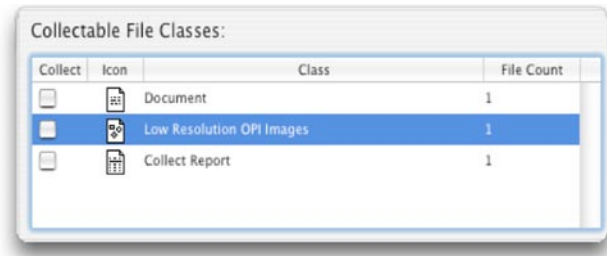
## **Collecting OPI Images Into Subfolders**

By default, the Low Resolution image will be placed in the same directory as the other non-OPI images. The High Resolution image(s) will be placed in a subfolder called “HiRes”. This should avoid confusion between the High and Low Resolution images,



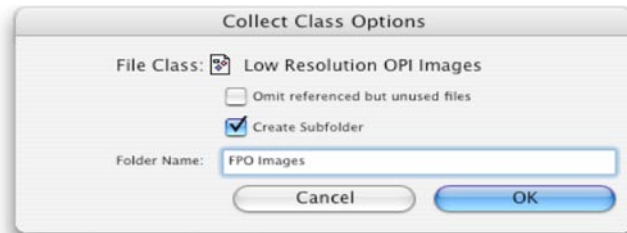
(figure 4)

- Open your document in FlightCheck.
- Once all the errors have been resolved and you are ready to collect your document, click the Collect button in the FlightStrip. The Collect Window will be displayed. (figure 4)

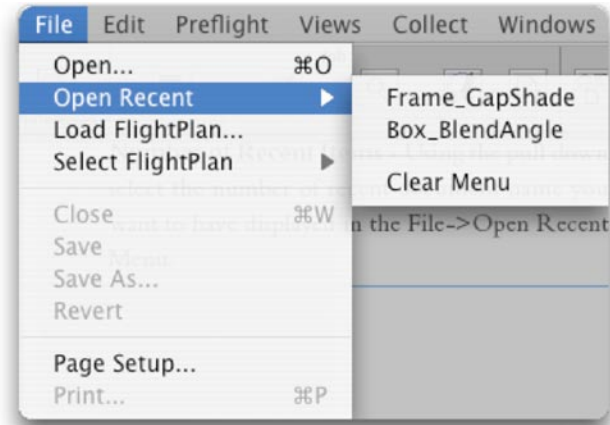


- Click and Highlight the Low Resolution OPI Images Collectable File Class.
- Now click on the Collectable File Class Options button located on the right hand side of the window.

- Check the box next to the “Create Subfolder” Option.
- Name the Folder FPO (or Low Res) Images.
- Click OK to go back to collect window.



## Recent Items



(figure 5)

Selecting Open Recent under the File Menu will allow quick access to files that have been previously opened in FlightCheck. (figure 5)

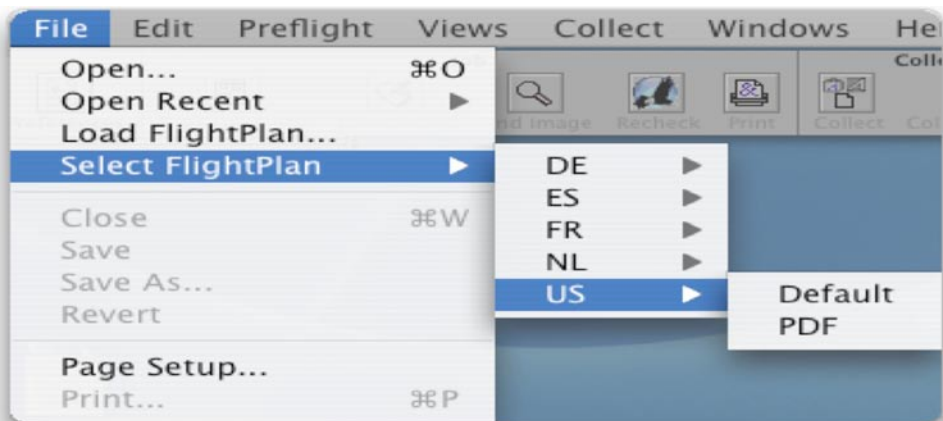
**Number of Recent Items Preferences** - Using the pull down menu select the number of recent document names to be displayed. (figure 6)



(figure 6)

## FlightPlan Switching

FlightPlan switching serves two main purposes, first to allow users to switch between the Default and PDF FlightPlans and second to easily switch between different languages. A new menu item; Select FlightPlan, has been added to the File Menu in FlightCheck to simplify switching between FlightPlans. To switch FlightPlans, simply click on the File menu, navigate to the Select FlightPlan menu and select the language and FlightPlan you wish to use.



The “Default” and “PDF” FlightPlans for all supported languages are installed by default.

(figure 7)

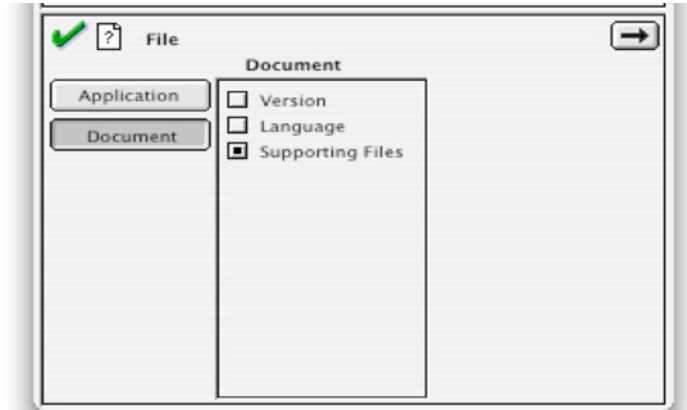
To remove a language: Remove the appropriate folder from FlightCheck’s Data folder located in the FlightCheck folder. Restart FlightCheck for the changes to take effect.

# NEW GROUND CONTROLS

## Supporting Files

The Supporting Files Ground Control is used to warn the user when a QuarkXPress XTension, is used during the creation of the document. *(figure 8)*

**NOTE:** This Ground Control is not available in FlightCheck Designer.



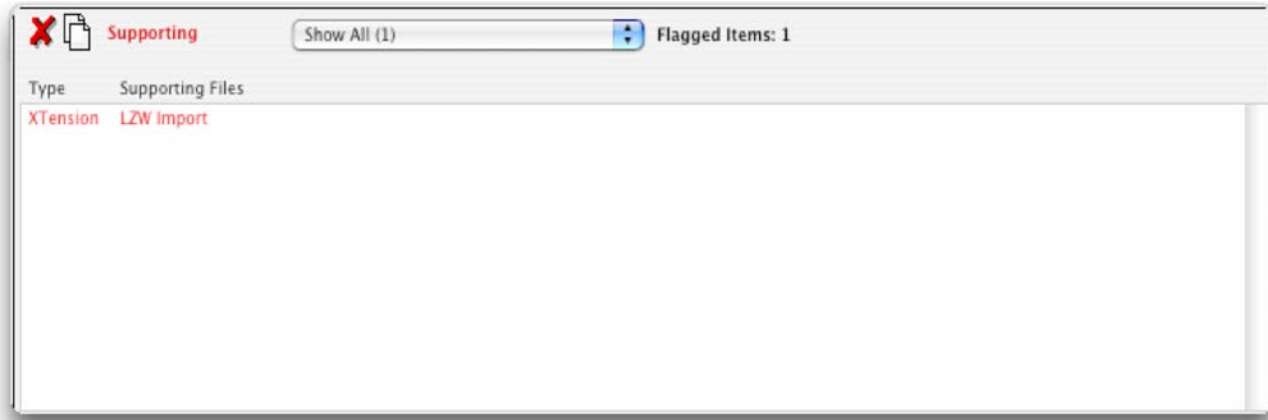
*(figure 8)*



*(figure 9)*

In the Overview Window there is a new button named Supporting. This is used to display or hide the supporting files detected for the current document. *(figure 9)*

## Supporting Files Cont.



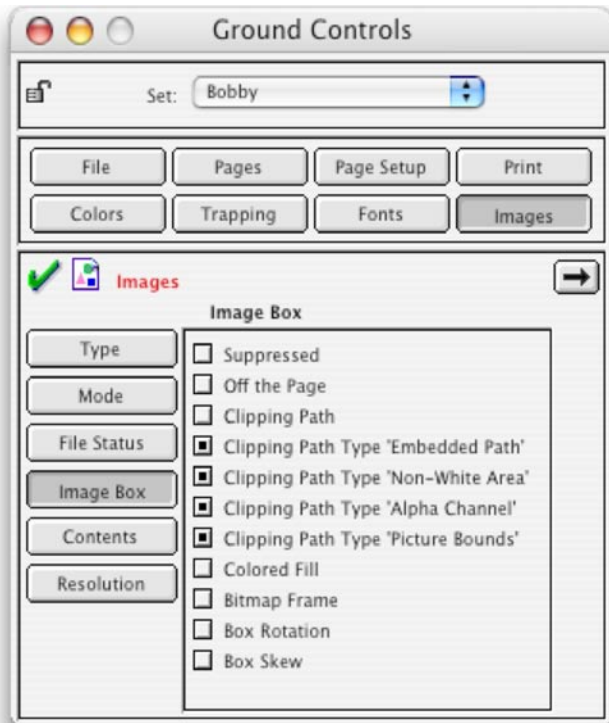
*(figure 10)*

The Supporting Files window displays the type and name of the file. You can sort the list by clicking on the word “Type” or the words “Supporting Files”. The list will then be sorted by column based on which column heading you clicked on. Clicking on the column heading again reverses the order of the sorted items.

**NOTE:** Not all XTensions are currently detectable but will be listed as “Table” under the Supporting files column . The required XTensions are not collected during the collection process as they may require serialization or activation.

## Clipping Path Types

FlightCheck will now flag a specific type of clipping path used in a document. (figure 11)



(figure 11)

- **Clipping Path Type “Embedded Path”**  
Used to alert the user when an image has the Embedded Path option selected.
- **Clipping Path Type “Non-White Area”**  
Used to alert the user when an image has the Non-White Area option selected. This is referred to as “Detect Edges” in InDesign.
- **Clipping Path Type “Alpha Channel”**  
Used to alert the user when an image has the Alpha Channel option selected.
- **Clipping Path Type “Picture Bounds”**  
Used to alert the user when an image has the Picture Bounds option selected.

## NEW FEATURES

### Custom Rules (For FC Professional Only)

The Custom Rules feature was designed to add rules that are not currently part of the Default or PDF FlightPlans.

The Custom Rules will be displayed in the File section of the Ground Controls. *(figure 12)*

The Custom Rules at this time are only visible in FlightCheck Professional's Ground Controls under the "File" tab.

FlightCheck Professional users that are using the Custom Rules feature can save and export Ground Control sets for use in FlightCheckDesigner. The Custom Rules that were active in FlightCheck Professional will be reported; however, the Custom Ground Control will not be visible in the FlightCheck Designer Ground Control interface.

The "Fill of None" ground control has been added back into the FlightCheck product through the use of the Custom Rules feature.



*(figure 12)*

